

TIME RECORDERS

ALL MODELS

User's Guide

Introduction
Movement Winding &
Disc replacement
Hour setting
Service

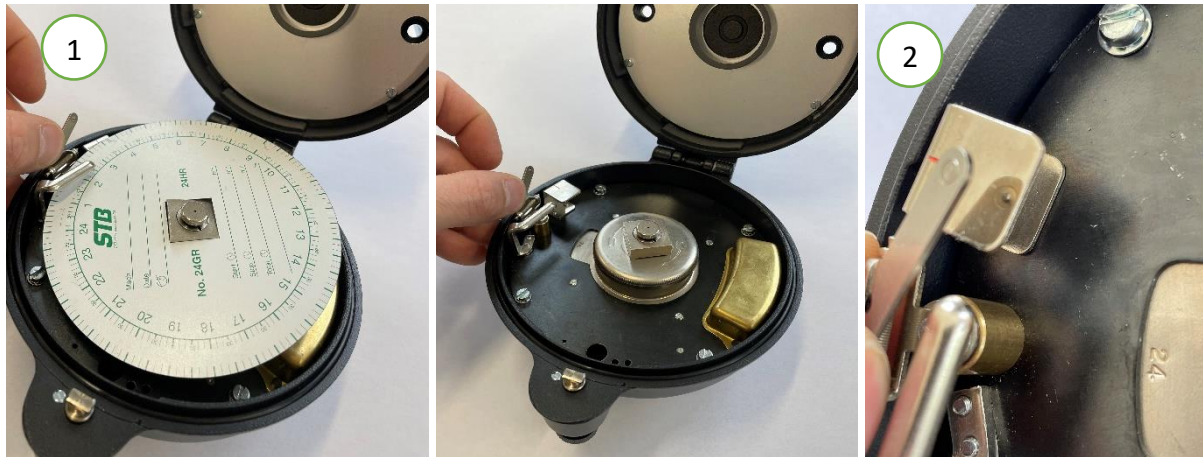


INTRODUCTION

This manual explain all the base operation that can be done on the recorder, for all otehr operations please contact your authorizer resseller.

REPLACEMENT OF THE DISC AND WINDING OF THE MOVEMENT

The STB time controllers have a power reserve of 8 days once the movement is completely wound. We usually take advantage of a disc change to proceed with the winding.



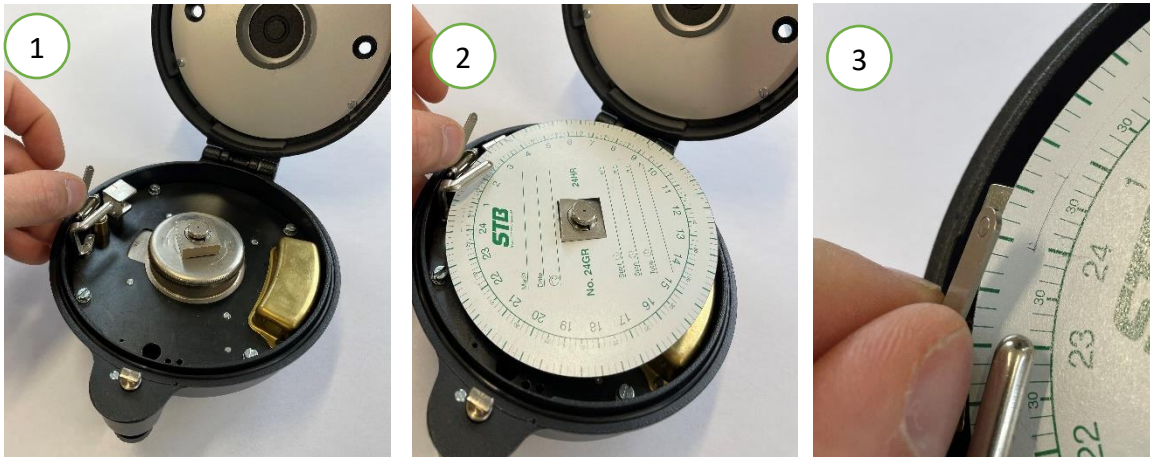
Carefully lift the stylus arm (1), remove the used disc, and **carefully** place the stylus back onto the metal support (2).



Then proceed to the reassembly by turning the drum clockwise (direction of the engraved arrows), until a resistance is felt.



IMPORTANT ! Never wind the movement counterclockwise, otherwise the movement may be damaged.



Carefully raise the arm of the stylus (1), while keeping the arm raised, put back the new disc (2) and gently put back the arm on the new disc (3).



Finally, if necessary, align the disc to the corresponding mark (1) at the current time (here 11:57) (2) by turning the square left or right as shown above (3).



IMPORTANT ! In any case, never let the arm go down without accompanying it, otherwise the sapphire of the stylus will be damaged.

TIME SET UP

To set the time, simply turn the round knob above the square (1), look at the dial (2) at the same time to ensure that the time is set correctly, check also that the disc is at the mark corresponding to the time displayed (3) and correct if necessary as described in the previous chapter.



SERVICE

For more information and quality service, please contact your dealer listed below:

