

OPUS line

Technical manual



Opus Bravo

entry units

BR50•10 Technical Manual

CHARACTERISTICS

The Bravo is top reading electronic entry unit that provides easy operation for underdesk safes as well as spy protection. The numbers can only be read up close by the operator. The code numbers cannot be “spied on” from the distance. The Entry Unit features a terminal for an electronic key. The integrated battery compartment in the bottom of the Bravo entry unit opens by moving a slider. Cable length is approximately 30 cm. The Bravo entry can be mounted as stationary or turnable model.

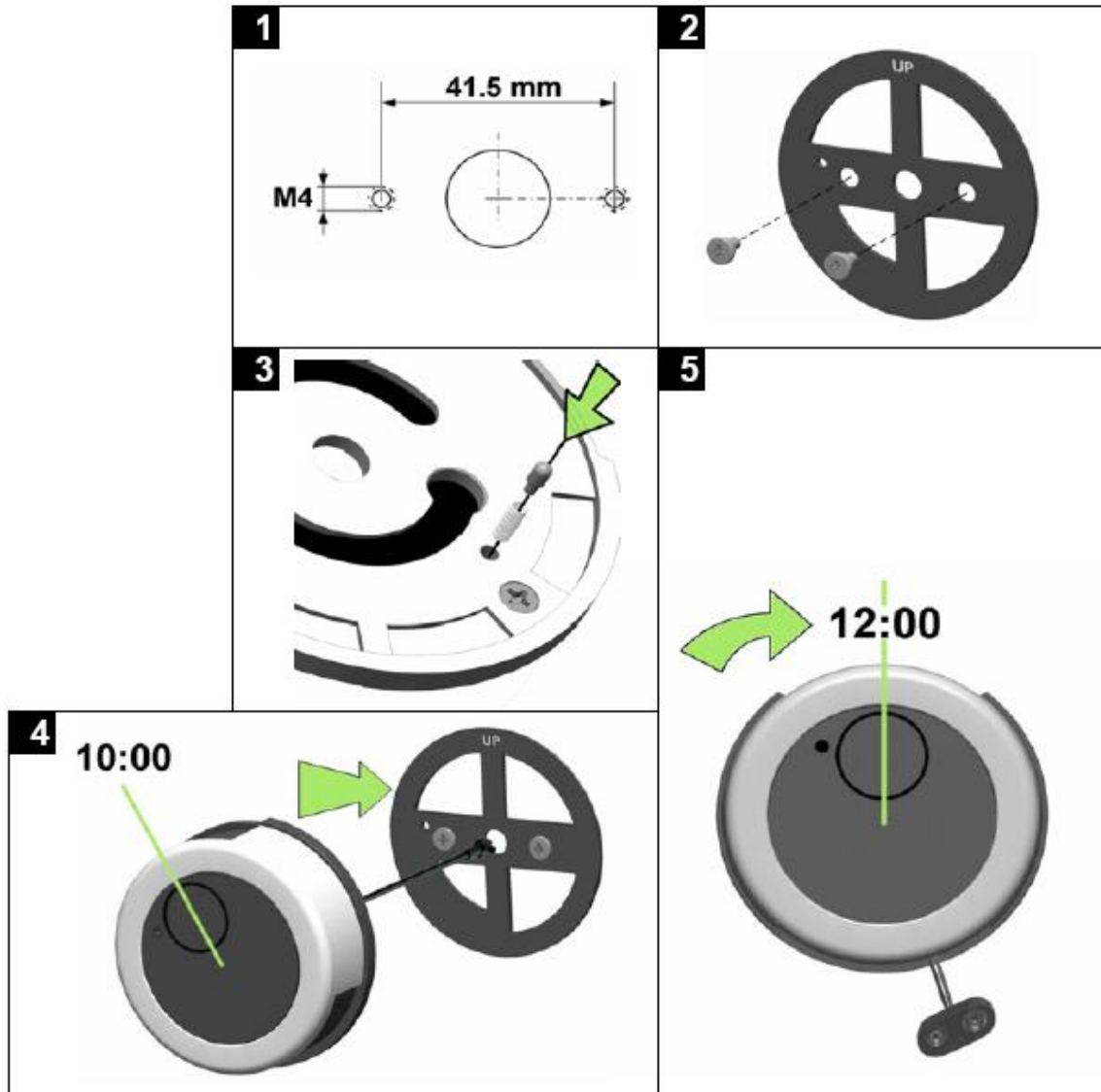
DIMENSIONS / MOUNTING INSTRUCTION

The Terminal for the electronic key (Dallas Key) is located in the front next to the light signal. In case the terminal is not required, it should be covered with the provided round black label.



STATIONARY MOUNTING:

The diameter of the cable hole should be minimum 9 mm, maximum 12 mm. The hole must be deburred well to avoid damage to the cable.



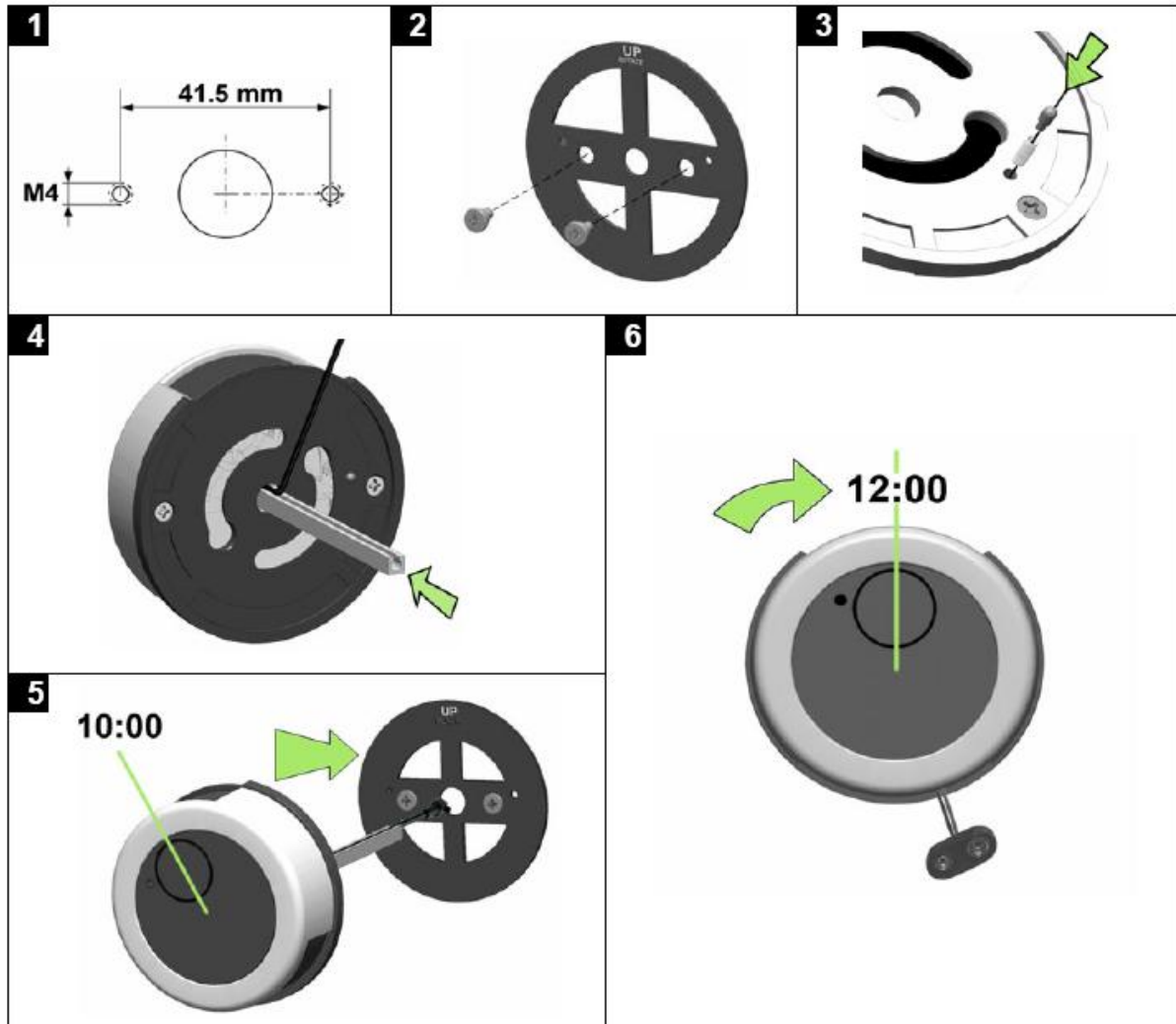
Prepare the mounting and cable holes according to picture 1. Hold the bearing plate in a way against the mounting surface that “UP LOCK” is readable on top (picture 2). Affix the bearing with the two mounting adapter (M4). Insert first the spring and then the pin into the hole on the back cover (picture 3). Route the cable through the cable hole, hold the unit at an approximately 10:00 o’clock position (picture 4), and slide it on the mounting adapters. Turn unit clockwise until it clicks into stationary position at 12:00.

The Bravo entry unit can now not be removed!

Connect one (1) battery to the battery clip. Only use 9V-ALKALINE batteries from brand name manufacturers like DURACELL™.

As TURNABL ENTRY UNIT with NL LOCK StraightBolt lock EM35•20:

The diameter of the cable hole should be minimum 9 mm, maximum 12 mm. The hole must be deburred well to avoid damage to the cable. Cut the grooved shaft to the appropriate length: Measure door thickness (from mounting surface of the Entry unit to the mounting surface of the lock) and add **40 mm** (1.6").



Prepare the mounting and cable holes according to picture 1. Hold the bearing plate in a way against the mounting surface that "UP ROTATE" is readable on top (picture 2). Affix the bearing with the two mounting adapter (M4 do not over tighten). Insert first the spring and then the pin into the hole on the back cover (picture 3). Insert the grooved shaft, with the cutting edge first, all the way into the entry housing (picture 4). Now push the cable into the groove until flat over the entire length of the shaft. Route the cable and shaft through the spindle hole of the door, hold the unit at an approximately 10:00 o'clock position, and slide it on the mounting adapters (picture 5). Turn unit clockwise until it clicks into straight position at 12:00.

The Bravo entry unit will not be detachable once the lock is installed.

Connect one (1) battery to the battery clip. Only use 9V-ALKALINE batteries from brand name manufacturers like DURACELL™.